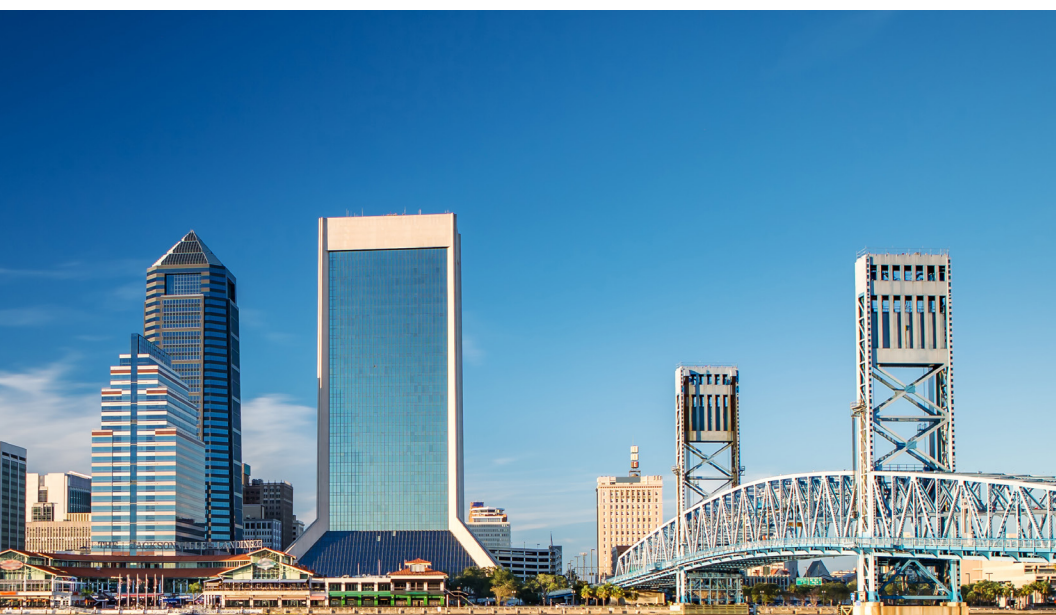




ASSOCIATION
of COLLEGE
HONOR
SOCIETIES

The Standard for Honor Society Excellence



2023 Annual Conference

FEBRUARY 16-18, 2023
JACKSONVILLE, FL

Agenda

WEDNESDAY, FEBRUARY 15

3:30 pm – 6:00 pm	Board Meeting <i>Captain's Boardroom</i>
6:00 pm	Attendee Meet-Up <i>Southbank Johnnie's in the Hotel Lobby</i>
6:30 pm	Board of Directors' Dinner <i>Invitation Only</i>

THURSDAY, FEBRUARY 16

8:00 am – 12:00 pm	Board Meeting <i>Captain's Boardroom</i>
8:00 am – 5:00 pm	Registration Open <i>Ballroom Foyer</i>
12:30 pm – 3:45 pm	Exhibitor Set-up <i>Windward</i>
1:00 pm – 2:30 pm	Opening Session and Dorothy Mitstifer Lecture <i>Starboard</i> Advancing DEIA through Courageous Conversations: Dr. Devan Ford-McCartney
2:30 pm – 4:00 pm	Council Business Meeting* <i>Starboard</i>
4:00 pm – 5:30 pm	Speed Networking with Exhibitors <i>Windward</i>
5:30 pm – 6:30 pm	Welcome Reception with Sponsors and Exhibitors <i>Windward</i>
6:45 pm	Meet-Up with Tau Beta Pi <i>Blue Fish Restaurant</i> Sign up by February 8

FRIDAY, FEBRUARY 17

7:30 am – 5:00 pm	Registration Open <i>Ballroom Foyer</i>
6:45 am – 7 :15 am	Morning Energizer! Group Riverfront Walk <i>Meet in Hotel Lobby</i>
7:45 am – 8:30 am	Breakfast and Roundtable Discussions <i>Starboard</i> All About Advisors: Eileen Merberg, Alpha Lambda Delta Society Management Tools: Katie Holmes, Alpha Chi Expanding to New Campuses (and Beyond): Kirsten Fox, Mortar Board Nonprofit Investing and Wealth Management: Tania Matz, LPL Financial Virtual vs. Hybrid Induction Ceremonies: Loria Brown Gordon, Alpha Kappa Mu Scholarships and Member Benefit Programs: Steve Loflin, NSCS

8:45 am – 9:45 am	Returning after COVID: Students' Mental Health Heather Walders, MSW, LCSW, CPH, CHES <i>Starboard</i>
9:45 am – 10:30 am	Helping Each Other in DEIA Work: An Interactive Session Facilitated by the ACHS DEIA Committee <i>Starboard</i>
10:30 am – 11:00 am	Break with Sponsors and Exhibitors <i>Windward</i>
11:00 am – 12:15 pm	Leading a Team, Communicating with Purpose Kathleen Tamara-Luchini "Katy" Colbry, PhD <i>Starboard</i>
12:15 pm – 2:15 pm	Lunch and Riverwalk Tour Sponsored by Visit Jacksonville <i>Anchor</i>
2:30 pm – 3:30 pm	Post-COVID Student Profile: Resources for Campus and National Organizations Amy Winiger, MS and Jen Castillo <i>Starboard</i>
3:30 pm – 4:00 pm	Break with Sponsors and Exhibitors <i>Windward</i>
4:00 pm – 5:00 pm	Effective Meetings, Board Meetings Too! Henry C. Lawton, Jr., PRP <i>Starboard</i>
4:00 pm – 6:00 pm	Exhibit Hall Tear-Down <i>Windward</i>
6:30 pm	Meet-Up <i>Sake House</i> Sign up at registration desk

SATURDAY, FEBRUARY 18

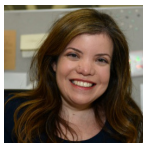
8:00 am – 12:00 pm	Registration Open <i>Ballroom Lobby</i>
7:30 am – 7:45 am	Board Meeting <i>Captain's Boardroom</i>
8:00 am – 8:45 am	Breakfast and Roundtable Discussion Topics - Repeated <i>Starboard</i>
8:45 am – 9:30 am	ACHS Committee Discussions <i>Starboard</i>
9:45 am – 11:00 am	Student Engagement Post COVID Eileen Merberg, Executive Director, Alpha Lambda Delta Steve Loflin, Founder, National Society of Collegiate Scholars <i>Starboard</i>
11:00 am – 12:00 pm	Closing Council Meeting* <i>Starboard</i>
Afternoon	Off-Site Event Options <i>See details at www.ACHSHonor.org</i>

* All member societies are expected to attend

Speakers

Jen Castillo

Jen Castillo graduated from St. Mary's University with a degree in Sociology. Jen is the Senior Manager of Scholarships and Advisor Relations and has been a part of the NSCS team since 2011. She manages the day-to-day operations of the scholarship department and works closely with our community partners to create programs for our members nationwide.



Kathleen Tamara-Luchini Colbry, PhD

Katy Luchini Colbry, PhD, is Assistant Dean for Engineering Graduate Student Services at Michigan State University and serves as co-PI for two NSF-funded workforce development programs. Dr. Colbry volunteers as Director of Engineering Futures, the professional development program of Tau Beta Pi, which provides communications, teamwork and leadership training.



Dr. Devan Ford-McCartney

Dr. Devan Ford-McCartney earned degrees in higher education from Texas A&M University (MS) and University of Arkansas (Ed.D.). She leads DEI initiatives at University of Texas MD Anderson Cancer Center and is lecturer of Women's Studies at University of Houston. She started Dr. Devan's Coaching + Consulting in 2016.



Henry C. Lawton, Jr., PRP

Henry's experience in presiding and years of teaching parliamentary procedure has prepared him to assist organization's officers and members with business meeting management that allows them to run effective, efficient, and productive meetings. His motto is "Preparing Others to Conduct Business Meetings Where Meaningful Work is Accomplished Orderly."



Steve Loflin, MS

Steve Loflin has spent his professional career recognizing, supporting, and elevating high-achieving students. He is the founder of The National Society of Collegiate Scholars (NSCS) which is the largest interdisciplinary honor society recognizing academically successful first and second year students which has served nearly 2 million lifetime members and 300+ chapters on college campuses in the US.



Eileen Merberg, MS

Eileen Merberg has been the Executive Director of Alpha Lambda Delta, The Honor Society for First-Year Academic Success, since 2015. Previously she was supporting student success in various capacities at Buffalo State University, Sonoma State University, and Loyola University Chicago.



Amy Winger, MS

Amy Winger earned a degree in Public Health from Western Kentucky University (MS). She is a Student Wellness Navigator for the WKU College of Health and Human Services in Bowling Green, KY. In her role, she helps students acclimate to the rigors of university life while emphasizing holistic health.



Heather Walders, MSW, LCSW, CPH, CHES

Heather Walders is a Licensed Clinical Social Worker in Florida, a Certified Health Education Specialist, and is Certified in Public Health. She currently serves as a psychotherapist and as the mental health outreach coordinator for the University of South Florida Counseling Center, where she has worked since early 2018.



Leadership

BOARD

President

Eileen Merberg, Alpha Lambda Delta

Vice President

Curt Gomulinski, Tau Beta Pi

Secretary

Lara Noah, Alpha Chi

Directors

Brad Conrad, Sigma Pi Sigma

Beverly Horvit, Kappa Tau Alpha

Melissa Martin, Phi Upsilon Omicron

Maureen Scott, Beta Kappa Chi

COMMITTEES

Bylaws

Curt Gomulinski, Tau Beta Pi, Chair

Christina Allrich, Beta Gamma Sigma

Lara Noah, Alpha Chi

Diversity, Equity, Inclusion, and Accessibility

Lara Noah, Alpha Chi, Chair

Beverly Horvit, Kappa Tau Alpha

Christi Luks, Omega Chi Epsilon

Trish Maxwell, Alpha Lambda Delta

Melinda Messineo, Alpha Kappa Delta

Suzanne Rupp, Pi Gamma Mu

Eligibility and Admissions

Orlando Madrigal, Upsilon Pi Epsilon, Chair

Alex Cross, Tau Beta Pi

Melinda Del Mastro, Sigma Delta Pi

Tricia Gomulinski, Tau Beta Pi

Christi Luks, Omega Chi Epsilon

Martha Zlokovich, Psi Chi

Investment Policy

Eileen Merberg, Alpha Lambda Delta, Chair

Brad Conrad, Sigma Pi Sigma

Melissa Martin, Phi Upsilon Omicron

Lara Noah, Alpha Chi

Tania Matz, LPL Financial

Mike Brown, Tau Beta Pi

Nominating

Paul Baggett, Phi Alpha, Chair

Steve Loflin, NSCS

Burrell Montz, Gamma Theta Upsilon

Holly Moorhead, Chi Sigma Iota

Kimberly Switzer, Sigma Lambda Chi

Program Committee

Curt Gomulinski, Tau Beta Pi, Chair

Loria Brown Gordon, Alpha Kappa Mu

Kirsten Fox, Mortar Board

Katie Holmes, Alpha Chi

Kevin Howell, Epsilon Pi Tau

Steve Loflin, NSCS

Deadra Mackie, Beta Kappa Chi

Melissa Martin, Phi Upsilon Omicron

Holly Roseski, Kappa Omicron Nu

Public Information

Katie Holmes, Alpha Chi, Chair

Beverly Horvit, Kappa Tau Alpha

Susan Iles, Psi Chi

Stephen Kennedy, Chi Sigma Iota

Dylan Lane, Tau Beta Pi

Melissa Martin, Phi Upsilon Omicron

Trish Maxwell, Alpha Lambda Delta

Kevin McCarthy, Delta Mu Delta

Holly Moorhead, Chi Sigma Iota

Jim Wilson, Alpha Epsilon Rho

Standards and Definitions

Jeffrey Chin, Alpha Kappa Delta, Chair

Paul Baggett, Phi Alpha

Donna Cherry, Phi Alpha

Burrell Montz, Gamma Theta Upsilon

Holly Moorhead, Chi Sigma Iota

Lara Noah, Alpha Chi

Jim Williams, Chi Epsilon

Martha Zlokovich, Psi Chi

NATIONAL OFFICE

2840 West Bay Drive, #141

Belleair Bluffs, FL 33760

(727) 940-2658 x2005

info@ACHShonor.org

Sponsors

Herff Jones

The Greek Division of Herff Jones serves as Official Jeweler to most organizations in the Greek



letter community. Corporately headquartered in Indianapolis, with our jewelry manufacturing located near Providence, RI, our talented artisans produce the finest fraternal pins, badges, rings, and accessory jewelry for our customers, in addition to offering other quality recognition products such as custom awards and plaques, medallions, honor cords and stoles, and fine paper products including membership certificates and charters.

Hyatt Hotels Jacksonville Riverfront



Hyatt Hotels Jacksonville Riverfront

Hyatt Regency Jacksonville Riverfront is located adjacent to the city's iconic Main Street Bridge, providing panoramic river views and walkable access to the heart of downtown. Our Downtown Jacksonville hotel leverages the largest function space in Northeast Florida, relaxing views from hotel rooms and meeting spaces, and new lobby concepts that foster connections and energize travelers.

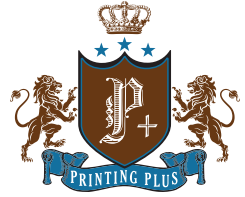
LPL Financial



Tania Matz is a registered financial advisor with many years of experience. She works with individuals, businesses and non-profits to achieve their goals in financial topics: financial planning, retirement planning and tax planning. She enjoys educating others to maximize their finances and leave their legacies for the future.

Printing Plus

Printing Plus continues to evolve to meet the needs of our fraternity partners. In addition to providing award-winning certificates, Printing Plus now offers New Membership Kits, Metal membership cards, and all regalia. Most recently Printing Plus has onboarded a digital press to provide color copies/packets, pamphlets, saddle-stitched booklets and perfect bound books. Please reach out to learn more on how Printing Plus can help your organization.



Visit Baton Rouge



In Louisiana's Capital, enjoy abundant music, cuisine, collegiate spirit, history, and culture!

In the Red Stick, explore historical attractions and local festivals. Visit Baton Rouge's downtown dining, parks and attractions within minutes of each other. Savor innovative dishes of authentic Louisiana cuisine that make Baton Rouge a place to visit.

Visit Jacksonville



Visit Jacksonville is a Destinations International accredited Destination Marketing Organization contracted since 1996 by the Duval County Tourist Development Council (TDC) to champion the growth of leisure and business tourism in Jacksonville. Learn more at visitjacksonville.com.

Exhibitors

Award Concepts

Since 1985 Award Concepts has been a leading manufacturer of custom jewelry for honor societies. We also specialize in graduation regalia, certificates, membership fulfillment and branded items as well as hosting online member stores. We pride ourselves on providing excellent quality products with quick turnaround time and outstanding customer service.



Church Hill Classics



What sets Church Hill Classics apart? Church Hill Classics manufactures insignia customized frames for graduates, and provides full-service certificate programming for companies, organizations, and associations, throughout the country. Our products are made in the US and our turn-key marketing programming is best-in-class! This is not new to Church Hill Classics. We've been delivering results for our partners for over 30 years! We lead the category in growth and customer satisfaction as evident in achieving net promoter scores of 90+ and over 8,000 5-star reviews.

Collegiate Regalia

We take care of the backend needs, so you can focus on your membership. Providing manufacturing, warehousing, and white label fulfillment, for your jewelry, certificates, graduation regalia, ceremonial equipment, merchandise and much more.

Crowded

Crowded is the first banking and financial management service designed specifically for member-based nonprofit clubs, groups, and their members. Our free app is tailored for crowds that exist between B2B and B2C that traditional banks have underserved. With payment solutions, banking tools, reporting features, tax tools, and organizational management software all in one package - our services revolutionize how 501(c)s manage money.



GreekTrack.com

Your complete honor society software platform which includes a custom email invitation system, website editor, membership fee collection via automated invoicing and online payments, job boards, online communities, membership directories, and much more.



ProposalSpace



Managing applications for awards and scholarships has never been easier or more affordable than with ProposalSpace. Visit proposalspace.com to get full details about features and pricing, or to get started in minutes without any obligation.

Schoen Trimming and Cord Co.



Since 1939, we have been the largest direct manufacturer of insignia tassels and honor cords in the country. In 2021, we partnered with Trophy House of Baton Rouge, LA to greatly expand our offerings of pins, medallions, and banners. We are proud of our 84 year heritage and will continue our tradition of manufacturing high quality products.

Tassel Depot

Tassel Depot is the largest US manufacturer of Graduation Tassels, Honor Cords, Ornaments, Stoles and Key Ring tassels in the country. Our 20,000 sq. ft. factory stocks over 200 combinations and solid Honor Cords that are Premium or Standard. We also offer add-ons such as custom charms and tassel tags. Stoles are plain, embroidered or printed.



Member Societies

- Alpha Beta Gamma, Business
- Alpha Chi, All Academic Fields
- Alpha Epsilon, Agricultural/Biological Engineering
- Alpha Epsilon Delta, Premedical
- Alpha Epsilon Rho, Electronic Media
- Alpha Eta Mu Beta, Biomedical Engineering
- Alpha Iota Delta, Decision Sciences and Information Systems
- Alpha Kappa Delta, Sociology
- Alpha Kappa Mu, All Academic Fields
- Alpha Lambda Delta, Freshman Scholarship
- Alpha Phi Sigma, Criminal Justice
- Alpha Pi Mu, Industrial Engineering
- Alpha Sigma Lambda, Continuing Education and Lifelong Learning
- Alpha Sigma Mu, Metallurgy and Materials Engineering
- Alpha Sigma Nu, General Scholarship - Jesuit Institutions of Higher Education
- Beta Gamma Sigma, Business and Management
- Beta Kappa Chi, Natural Sciences and Mathematics
- Beta Phi Mu, Library and Information Studies and Information Technology
- Chi Sigma Iota, Professional Counseling
- Delta Epsilon Sigma, General Scholarship in Colleges and Universities with a Catholic Tradition
- Delta Mu Delta, Business Administration
- Epsilon Pi Phi, Emergency Management
- Epsilon Pi Tau, Professions in Technology
- Gamma Theta Upsilon, Geography
- Kappa Mu Epsilon, Mathematics
- Kappa Omicron Nu, Human Sciences
- Kappa Tau Alpha, Journalism and Mass Communications
- Lambda Pi Eta, Communication
- Lambda Sigma, Student Leadership, Scholarship and Service
- Mortar Board, Scholarship, Leadership, and Service
- Mu Kappa Tau, Marketing
- National Society of Collegiate Scholars, Scholarship, Leadership and Service
- Omega Chi Epsilon, Chemical Engineering
- Omega Rho, Operations Research and Management Science
- Omicron Delta Epsilon, Economics
- Phi Alpha, Social Work
- Phi Alpha Theta, History
- Phi Beta Delta, International Scholars
- Phi Eta Sigma, Freshman Scholarship
- Phi Lambda Sigma, Pharmacy Leadership
- Phi Sigma, Biological Sciences, All Pure and Applied Fields
- Phi Sigma Iota, Foreign Languages, Linguistics, Literatures, ESL, and Cultures
- Phi Sigma Tau, Philosophy
- Phi Upsilon Omicron, Family and Consumer Sciences
- Pi Delta Phi, French
- Pi Gamma Mu, Social Sciences
- Pi Kappa Lambda, Music
- Pi Omega Pi, Business Education
- Pi Sigma Alpha, Political Science
- Pi Tau Sigma, Mechanical Engineering
- Pi Theta Epsilon, Occupational Therapy
- Psi Beta, Psychology at Two-year Colleges
- Psi Chi, Psychology
- Rho Chi, Pharmacy
- Sigma Delta Pi, Spanish
- Sigma Lambda Alpha, Landscape Architecture
- Sigma Lambda Chi, Construction Management
- Sigma Pi Sigma, Physics
- Sigma Tau Delta, English
- Sigma Theta Tau, Nursing
- Tau Alpha Pi, Engineering Technology
- Tau Beta Pi, Engineering
- Tau Sigma Delta, Architecture and Allied Arts
- Theta Alpha Kappa, Religious Studies / Theology
- Upsilon Pi Epsilon, Computing and Information Disciplines
- Xi Sigma Pi, Forestry